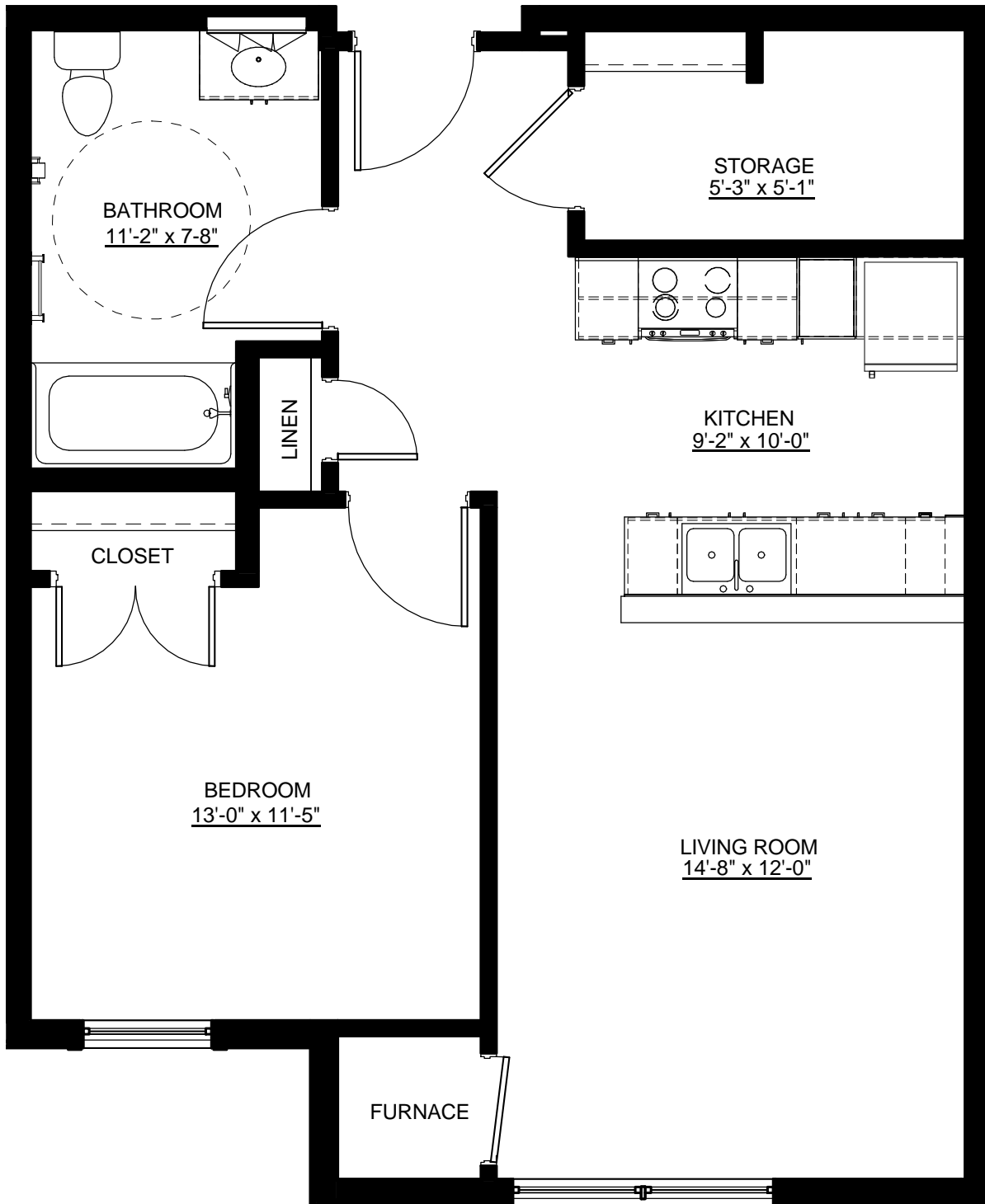


One-Bedroom Apartment in Building A

\$600/month

At or below 60% AMI

18 of these units available

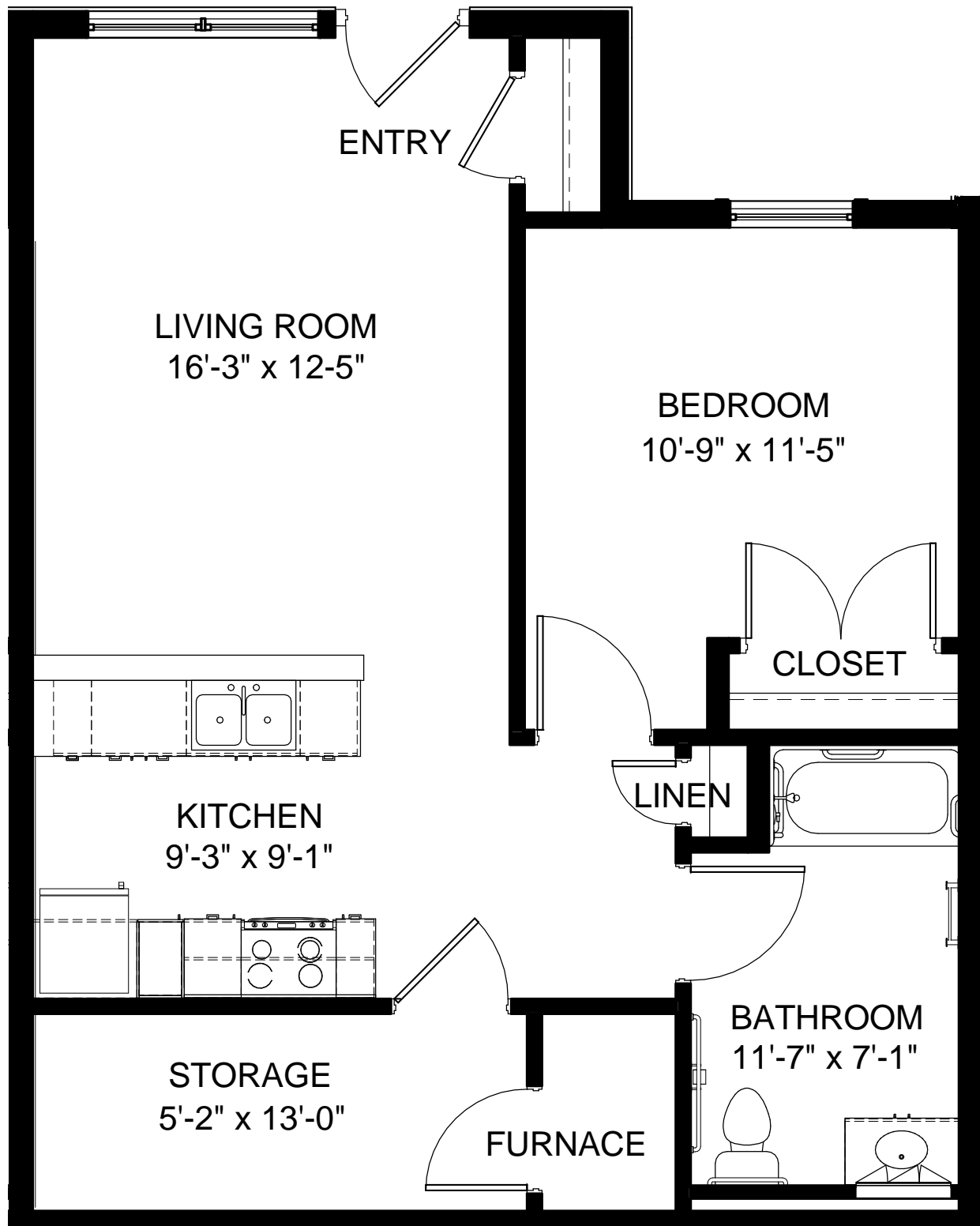


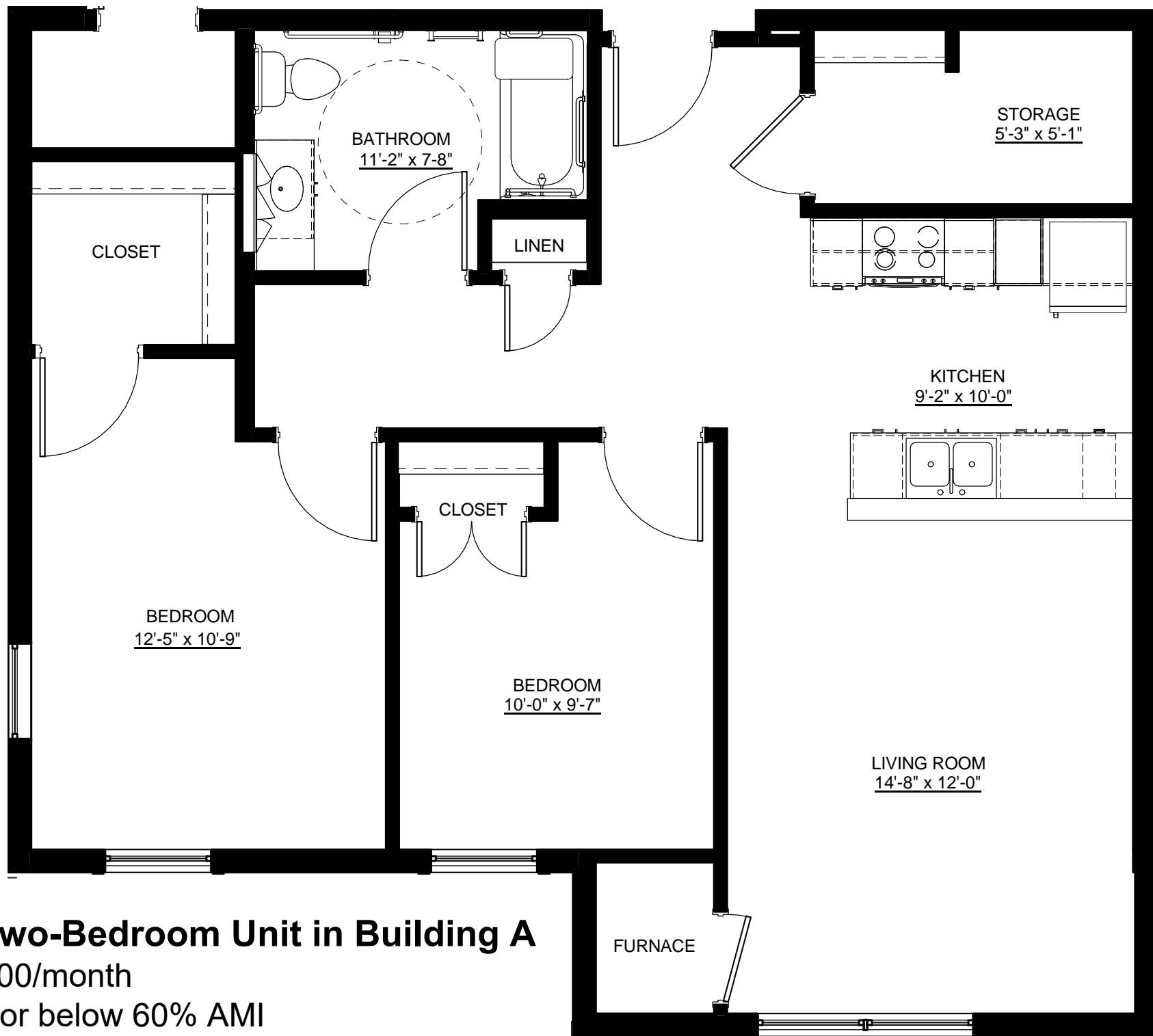
One-Bedroom Townhouse in Building B

\$750/month

60%-90% AMI range

6 of these units available



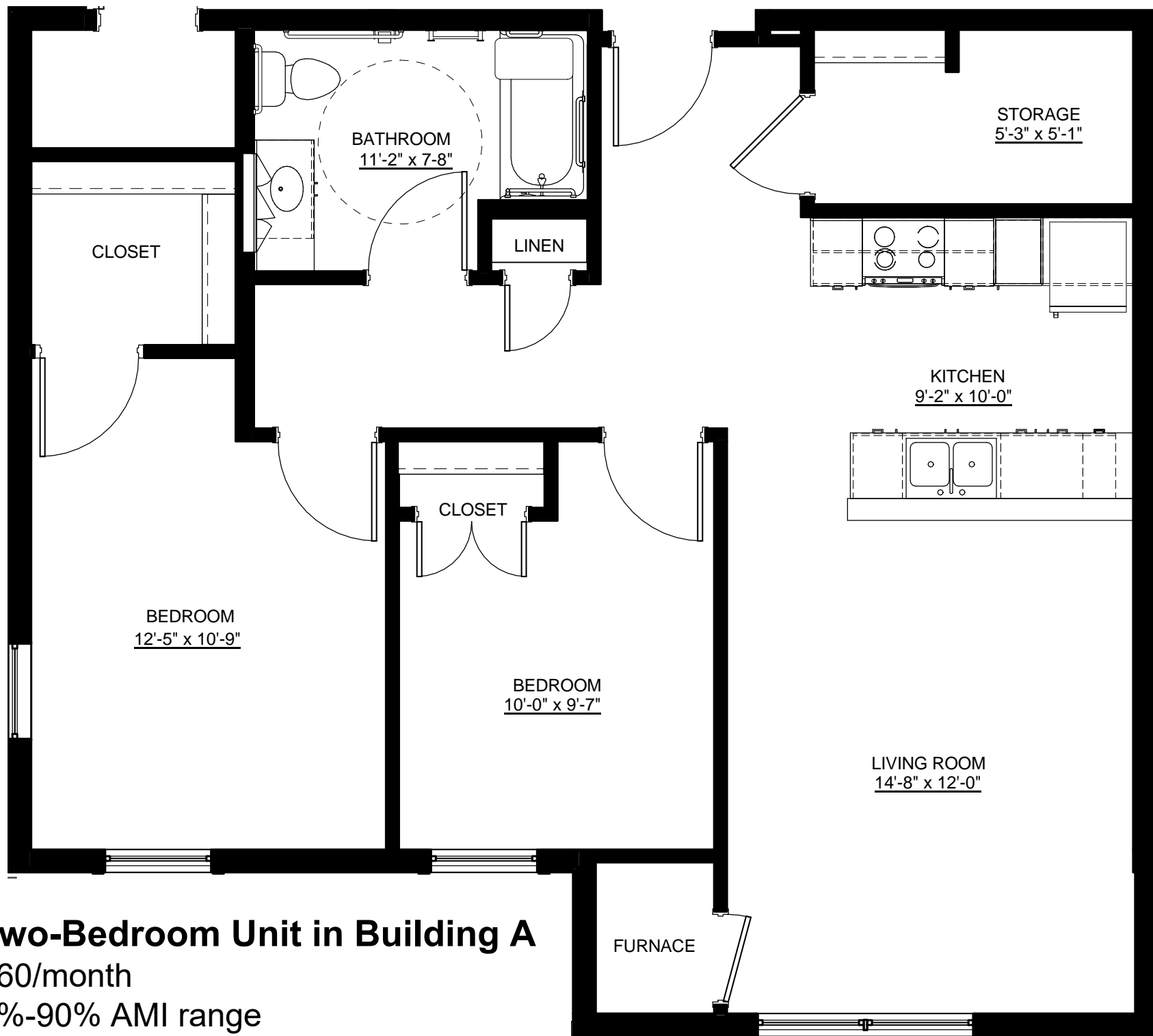


Two-Bedroom Unit in Building A

\$700/month

At or below 60% AMI

7 of these units available

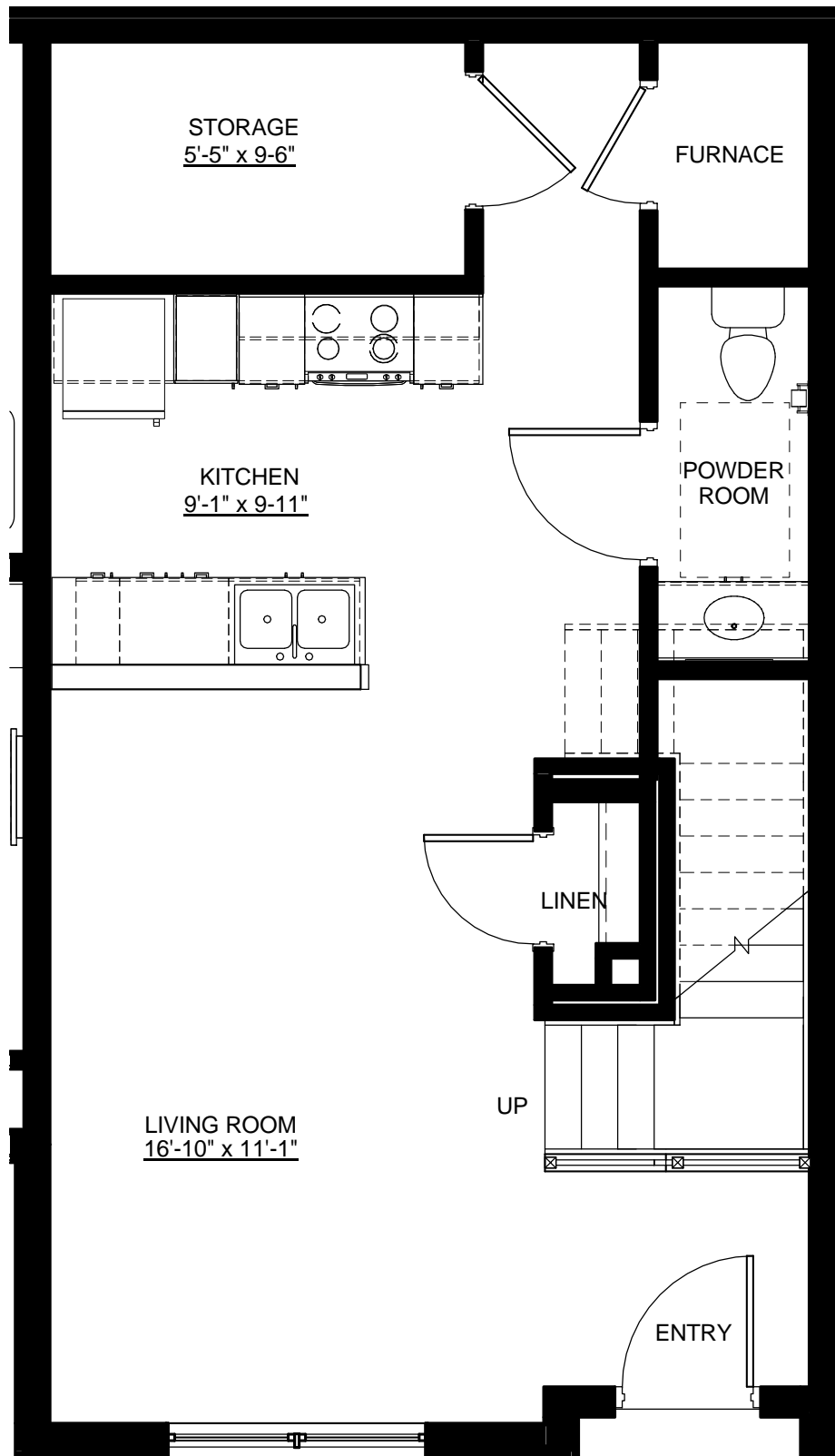


Two-Bedroom Unit in Building A

\$860/month

60%-90% AMI range

1 of these units available

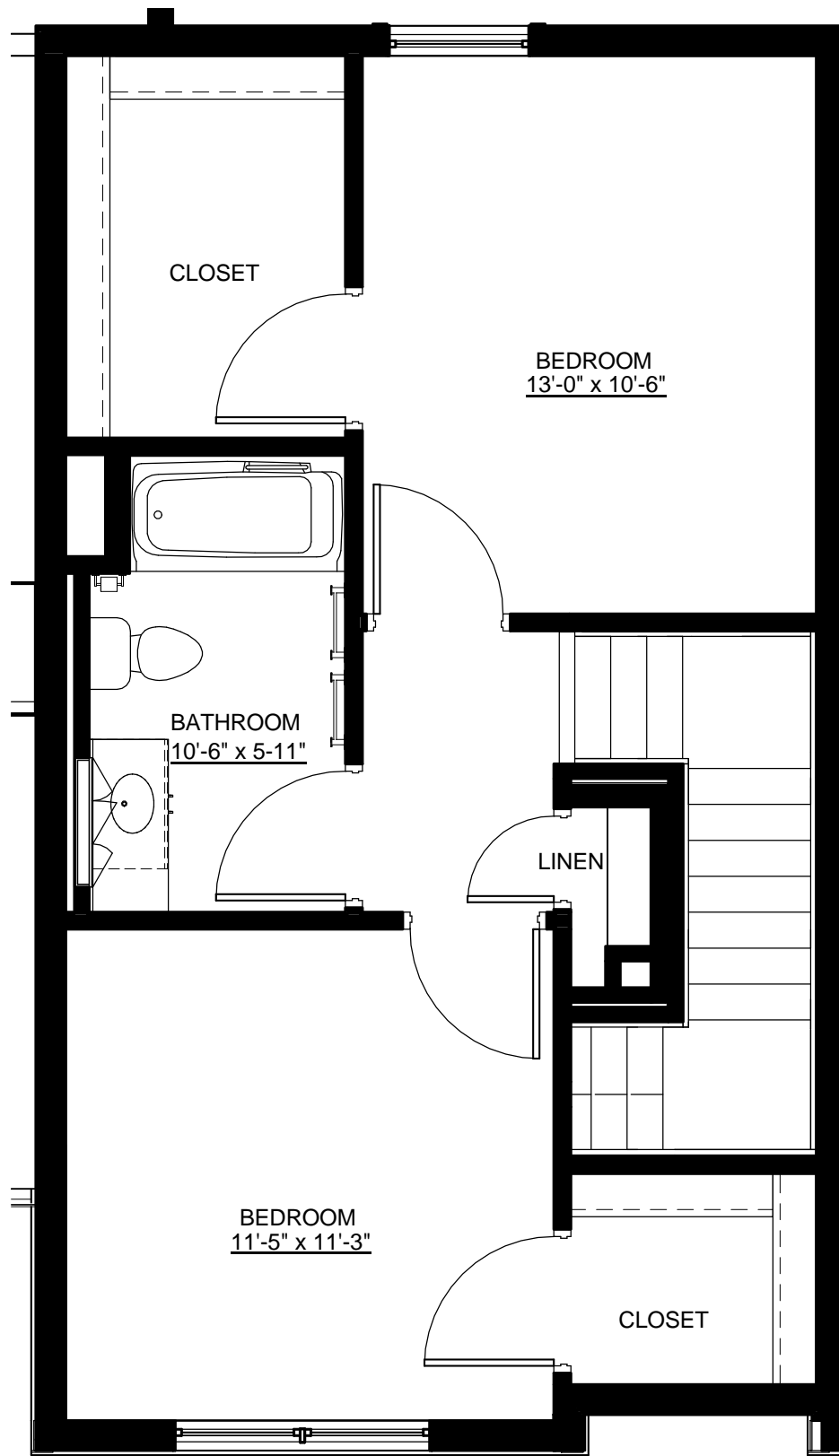


Two-Bedroom Townhouse in Building B

\$950/month

60%-90% AMI range

8 of these units available



Two-Bedroom Townhouse in Building B

\$950/month

60%-90% AMI range

8 of these units available